

# SURFACE-MOUNT POWER INDUCTORS

## FASNRV3012,4012,4020 SERIES



### FEATURES:

Low profile, low RDC, high current handling capacities  
Magnetically shielded structure that ensures the  
high-density mounting configurations  
Provided in embossed carrier tape packaging for use with automatic mounting machines

### OPTIONS:

Ideally used in Portable telephones, PDA, DSC, DC-DC converters, etc

### COMMON APPLICATIONS:

SNRV  $\frac{3010}{a}$   $\frac{1R0}{b}$   $\frac{N}{c}$   $\frac{N}{d}$

a: Series name

b: Product dimensions

c: Inductance Value [1R0:1.0uH;100;10uH;101:100uH]

d: Inductance Tolerance [K:10%;M:20%;N:30%]

### ELECTRICAL CHARACTERISTICS

Part Number	Inductance [uH]	DCR [mΩ] Max	Isat [A]
FASNRV3012-R33N	0.33	30	7.20
FASNRV3012-R47N	0.47	36	6.80
FASNRV3012-R68N	0.68	44	5.80
FASNRV3012-1R0N	1.0	58	4.20
FASNRV3012-1R5N	1.5	77	3.40
FASNRV3012-2R2N	2.2	110	2.80
FASNRV3012-3R3N	3.3	158	2.20
FASNRV3012-4R7N	4.7	235	2.00
FASNRV3012-6R8N	6.8	340	1.60
FASNRV3012-100M	10	474	1.20

Part Number	Inductance [uH]	DCR [mΩ] Max	Isat [A]
FASNRV4020-1R0N	1.0	28	8.70
FASNRV4020-1R5N	1.5	38	7.70
FASNRV4020-2R2N	2.2	50	6.10
FASNRV4020-3R3N	3.3	74	4.70
FASNRV4020-4R7N	4.7	110	4.00
FASNRV4020-6R8N	6.8	158	3.00
FASNRV4020-100M	10	218	2.80

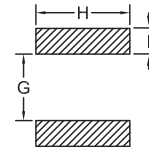
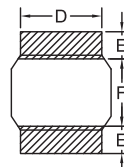
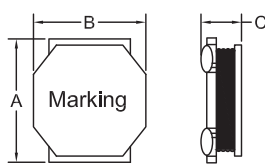
Part Number	Inductance [uH]	DCR [mΩ] Max	Isat [A]
FASNRV4012-R33N	0.33	32	10.3
FASNRV4012-R47N	0.47	41	9.10
FASNRV4012-R68N	0.68	41	5.50
FASNRV4012-1R0N	1.0	59	5.70
FASNRV4012-1R2N	1.2	59	4.00
FASNRV4012-1R5N	1.5	70	3.90
FASNRV4012-2R2N	2.2	79	2.80
FASNRV4012-3R3N	3.3	125	2.80
FASNRV4012-4R7N	4.7	166	2.30
FASNRV4012-6R8N	6.8	226	1.60
FASNRV4012-100M	10	335	1.55
FASNRV4012-220M	22	720	1.05

### TEST CONDITIONS

L = 82uH TEST FREQUENCY AT 100KHz/0.25V.

L > 82uH TEST FREQUENCY AT 1KHz/0.25V.

### TECHNICAL INFORMATION



DIMENSIONS IN mm

Part number	A	B	C	D	E	F	G	H	I
FASNRV3012	3.0±0.2	3.0±0.2	1.35 Max	2.6 REF	1.13 REF	0.82 REF	3.5 REF	2.9 REF	0.5 REF
FASNRV4012	4.0±0.2	4.0±0.2	1.35 Max	3.5 REF	1.3 REF	1.4 REF	4.5 REF	3.8 REF	1.1 REF
FASNRV4020	4.0±0.2	4.0±0.2	2.05 Max	3.5 REF	1.0 REF	2.0 REF	4.5 REF	3.8 REF	1.7 REF

### PHYSICAL CHARACTERISTICS