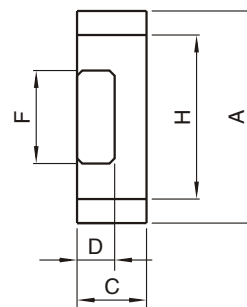
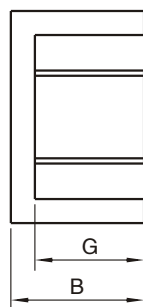
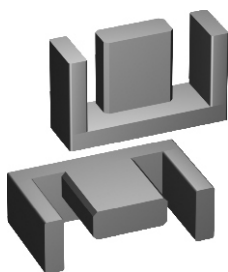


EEM & EP TYPE CORES



EEM

EEM TYPE CORES

(MATERIALS): H6K, H4K, P1, P2, P3

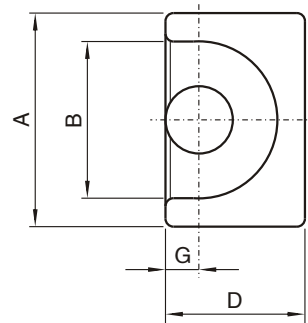
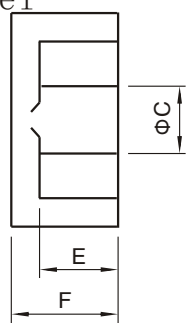
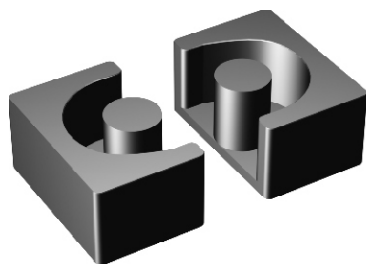
Dimensions & Effective parameter

CORES TYPE	Dimensions(mm)							Effective parameter					
	A	B	C	D	F	G	H	C1 (mm ³)	Ae (mm ²)	Le (mm)	Ve (mm ³)	Al ±25% (nH/N ²)	Weight (g)
EEM10.5	10.5±0.3	5.20±0.1	27.±0.1	1.45±0.2	4.55±0.25	3.75±0.20	7.75±0.25	3.29	7.2	23.7	171	500 (p3)	1.2
EEM12.7	12.7±0.3	6.85±0.2	3.5±0.2	2.0±0.2	5.40±0.25	4.55±0.20	9.0±0.25	2.50	11.4	28.5	325	700 (p3)	1.6
EEM21	2.08±0.3	12.1±0.2	4.5±0.2	2.9±0.2	8.40±0.30	9.20±0.20	15.0±0.3	2.18	23.9	52.1	1245	1200 (p3)	6.0
EEM25	25±0.75	12.6±0.2	12.45±0.25	8.3±0.3	8.80±0.25	9.55±0.25	19.2±0.4	0.81	7.30	60.0	4300	3350 (P3)	21.0

EP TYPE CORES

(MATERIALS): H10K, H8K, P1, P2, P3

Dimensions & Effective parameter



EP

CORE TYPE	Dimensions (mm)							Parameter Effective					
	A	B	ΦC	D	E	F	G	C1 (mm ³)	Ae (mm ²)	Le (mm)	Ve (mm ³)	Al ±25% (nH/N ²)	Weight (g)
EP5	6.0±0.15	4.4±0.15	1.80 ⁺⁰ _{-0.15}	3.90 ⁺⁰ _{-0.25}	2.15 ⁺⁰ _{-0.1}	2.8±0.1	10.9±0.1	3.154	3.09	9.73	30	552 (P3)	1.1
EP7	9.2±0.2	7.4±0.2	3.40±0.2	6.5±0.3	2.5±0.3	3.75±0.1	11.8±0.2	1.52	10.3	15.7	163	3500 (H10K)	1.4
EP10	11.5±0.3	9.4±0.2	3.45±0.3	7.85±0.4	4.3±0.2	5.2±0.4	1.95±0.25	1.70	11.3	19.3	218	3300 (H10K)	2.8
EP13	12.5±0.3	10.0±0.3	4.50±0.3	9.0±0.4	4.5 min	6.5±0.4	2.5±0.20	1.24	19.6	24.3	476	5000 (H10K)	5.1
EP17	18.0±0.4	12.0±0.4	5.85±0.35	11.25±0.5	5.5±0.3	8.5±0.4	3.25±0.2	0.84	33.9	28.5	964	11500 (H10K)	13.0
EP20	24.0±0.5	16.5±0.4	9.00±0.5	15.3±0.7	7.0±0.3	10.8±0.4	4.5±0.2	0.51	78.3	39.8	3110	4000 (P3)	32.0
EP30	30.0±0.5	24.1±0.5	14.55±0.25	23.1±0.5	15.0±0.2	11.8±0.2	7.6±0.25	0.35	179.0	39.8	11200	6600 (P3)	75.0