

Single port transformer modules 24Pin series

FEATURES

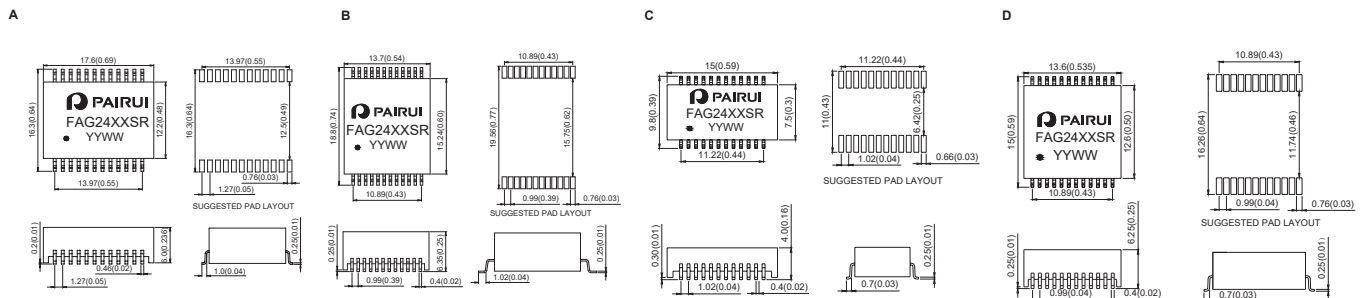
Cable interface for isolation and low common mode emissions
Compliant with IEEE 802.3 standard for 1000Base-T
RoHS compliant



Electrical Specification@25°C Operating Temperature 0 to 70°C

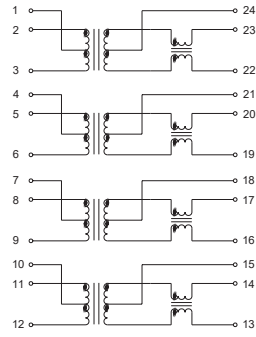
Part Number	Insertion Loss (dB Max) 1-125MHz	Return Loss (dB Typical) MHz				CMRR (dB Min) MHz		Cross talk (dB Min) MHz		Isolation Voltage (Vrms Min)	Package
		1-30	40	50	60-80	0.1-60	60-100	0.1-60	60-100		
FAG2401SR	-1.0	-18	-14.4	-13.1	-12	-42	-40	-40	-38	1500	A
FAG2402SR	-1.0	-18	-14.4	-13.1	-12	-42	-40	-40	-38	1500	A
FAG2403SR	-1.0	-18	-14.4	-13.1	-12	-42	-40	-40	-38	1500	B
FAG2404SR	-1.0	-18	-14.4	-13.1	-12	-42	-40	-40	-38	1500	B
FAG2405SR	-1.0	-18	-14.4	-13.1	-12	-42	-40	-40	-38	1500	B
FAG2406SR	-1.0	-18	-14.4	-13.1	-12	-42	-40	-40	-38	1500	C
FAG2407SR	-1.0	-18	-14.4	-13.1	-12	-42	-40	-40	-38	1500	B
FAG2408SR	-1.0	-18	-14.4	-13.1	-12	-42	-40	-40	-38	1500	C
FAG2409SR	-1.0	-18	-14.4	-13.1	-12	-42	-40	-40	-38	1500	D
FAG2410SR	-1.0	-18	-14.4	-13.1	-12	-42	-40	-40	-38	1500	D
FAG2411SR	-1.0	-18	-14.4	-13.1	-12	-42	-40	-40	-38	1500	A
FAG2412SR	-1.0	-18	-14.4	-13.1	-12	-42	-40	-40	-38	1500	B
FAG2413SR	-1.0	-18	-14.4	-13.1	-12	-42	-40	-40	-38	1500	D
FAG2414SR	-1.0	-18	-14.4	-13.1	-12	-42	-40	-40	-38	1500	A
FAG2415SR	-1.0	-18	-14.4	-13.1	-12	-42	-40	-40	-38	1500	A

Dimension : mm[inch] +/-0.25[0.01]

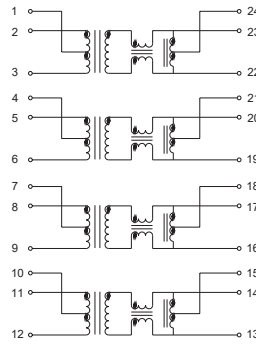


Schematic

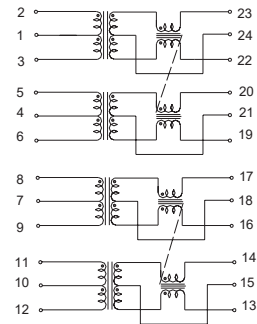
FAG2401SR,FAG2404SR,FAG2406SR,
FAG2409SR,FAG2414SR



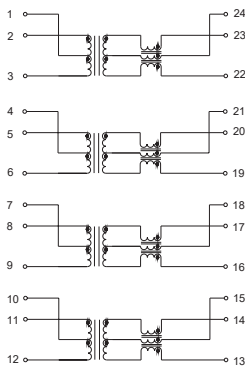
FAG2402SR,FAG2403SR



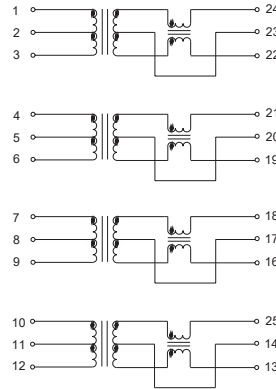
FAG2410SR



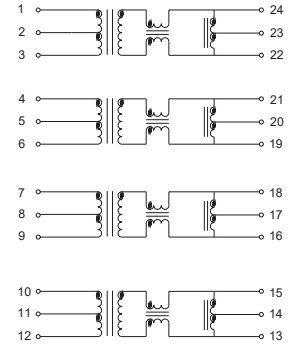
FAG2405SR



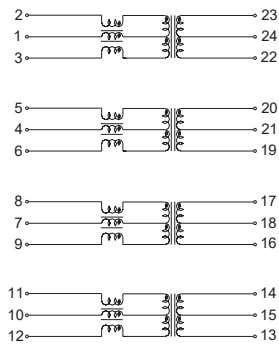
FAG2407SR



FAG2408SR,FAG2412SR



FAG2415SR,FAG2413SR



FAG2411SR

