

# Single port transformer modules 16Pin series

## FEATURES

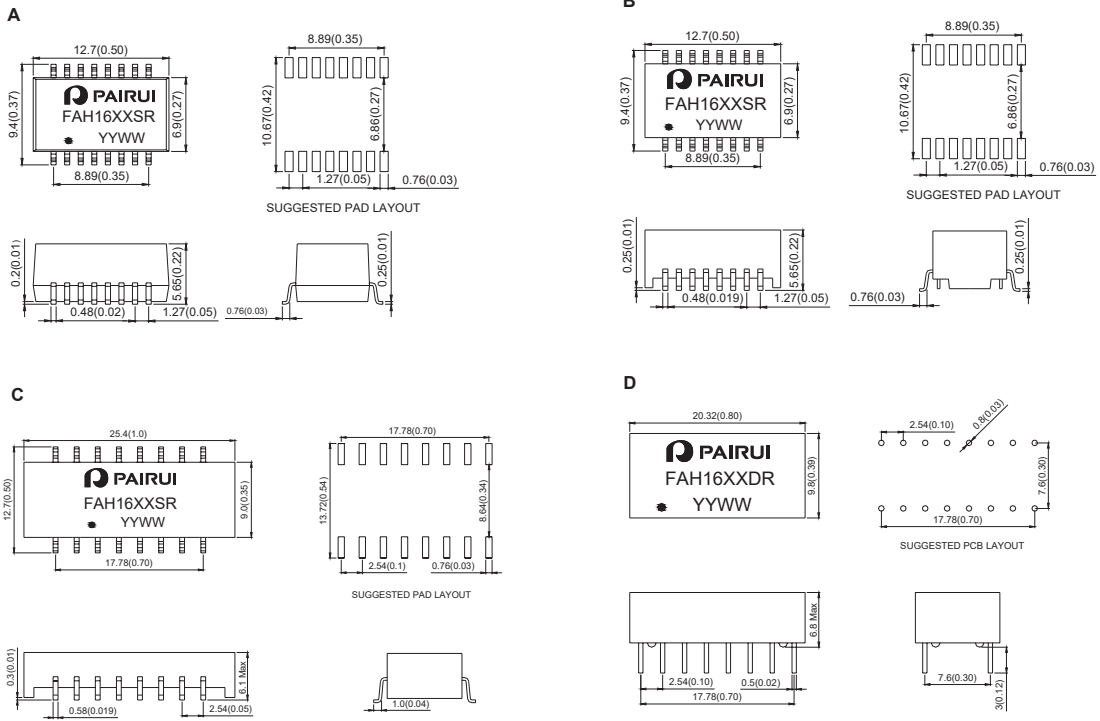
Compliant with IEEE 802.3 standard.  
Primary inductance:350uH Min.@ 100KHz,0.1Vrms,8mA  
RoHS compliant



## Electrical Specification@25°C Operating Temperature 0 to 70°C

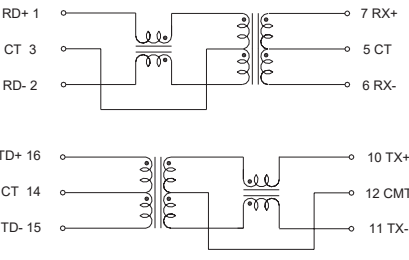
Part Number	Insertion Loss (dB Max) 1-100MHz	Return Loss (dB Typical) MHz				CMRR (dB Min) MHz		Cross talk (dB Min) MHz		Isolation Voltage (Vrms Min)	Package
		1-30	40	50	60-80	0.1-60	60-100	0.1-60	60-100		
FAH1601SR	-1.0	-18	-14.4	-13.1	-12	-42	-40	-40	-38	1500	A
FAH1602SR	-1.0	-18	-14.4	-13.1	-12	-42	-40	-40	-38	1500	A
FAH1603SR	-1.0	-18	-14.4	-13.1	-12	-42	-40	-40	-38	1500	A
FAH1604SR	-1.0	-18	-14.4	-13.1	-12	-42	-40	-40	-38	1500	B
FAH1605SR	-1.0	-18	-14.4	-13.1	-12	-42	-40	-40	-38	1500	B
FAH1606SR	-1.0	-18	-14.4	-13.1	-12	-42	-40	-40	-38	1500	B
FAH1607SR	-1.0	-18	-14.4	-13.1	-12	-42	-40	-40	-38	1500	B
FAH1608SR	-1.0	-18	-14.4	-13.1	-12	-42	-40	-40	-38	1500	B
FAH1609SR	-1.0	-18	-14.4	-13.1	-12	-42	-40	-40	-38	1500	B
FAH1610SR	-1.0	-18	-14.4	-13.1	-12	-42	-40	-40	-38	1500	B
FAH1611SR	-1.0	-18	-14.4	-13.1	-12	-42	-40	-40	-38	1500	B
FAH1612SR	-1.0	-18	-14.4	-13.1	-12	-42	-40	-40	-38	1500	C
FAH1613SR	-1.0	-18	-14.4	-13.1	-12	-42	-40	-40	-38	1500	C
FAH1614SR	-1.0	-18	-14.4	-13.1	-12	-42	-40	-40	-38	1500	C
FAH1601DR	-1.0	-18	-14.4	-13.1	-12	-42	-40	-40	-38	1500	D
FAH1602DR	-1.0	-18	-14.4	-13.1	-12	-42	-40	-40	-38	1500	D
FAH1603DR	-1.0	-18	-14.4	-13.1	-12	-42	-40	-40	-38	1500	D
FAH1604DR	-1.0	-18	-14.4	-13.1	-12	-42	-40	-40	-38	1500	D
FAH1605DR	-1.0	-18	-14.4	-13.1	-12	-42	-40	-40	-38	1500	D
FAH1606DR	-1.0	-18	-14.4	-13.1	-12	-42	-40	-40	-38	1500	D
FAH1607DR	-1.0	-18	-14.4	-13.1	-12	-42	-40	-40	-38	1500	D
FAH1608DR	-1.0	-18	-14.4	-13.1	-12	-42	-40	-40	-38	1500	D
FAH1609DR	-1.0	-18	-14.4	-13.1	-12	-42	-40	-40	-38	1500	D
FAH1610DR	-1.0	-18	-14.4	-13.1	-12	-42	-40	-40	-38	1500	D
FAH1611DR	-1.0	-18	-14.4	-13.1	-12	-42	-40	-40	-38	1500	D
FAH1612DR	-1.0	-18	-14.4	-13.1	-12	-42	-40	-40	-38	1500	D
FAH1613DR	-1.0	-18	-14.4	-13.1	-12	-42	-40	-40	-38	1500	D
FAH1614DR	-1.0	-18	-14.4	-13.1	-12	-42	-40	-40	-38	1500	D

**Dimension : mm[inch]+/-0.25[0.01]**

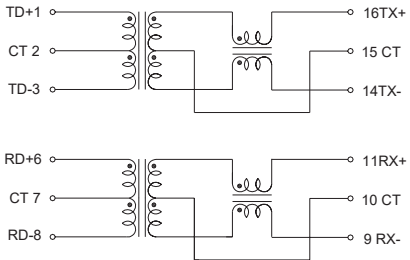


**Schematic**

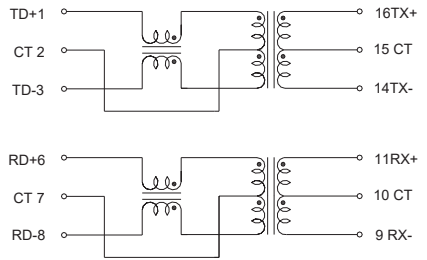
**FAH1607SR,FAH1609SR,FAH1613SR, FAH1602DR**



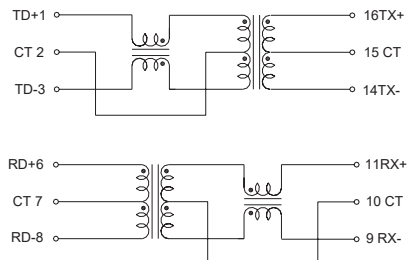
**FAH1601SR,FAH1612SR, FAH1601DR**



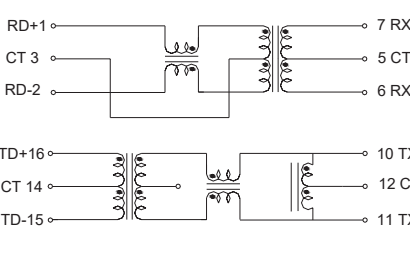
**FAH1602SR**



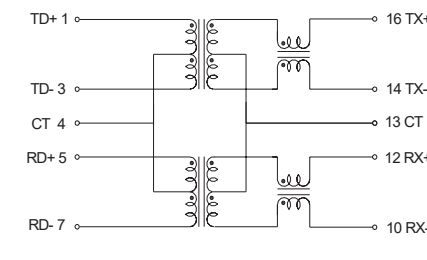
**FAH1604SR,FAH1611SR,FAH1606DR**



**FAH1605SR,FAH1610SR,FAH1614SR,FAH1608DR**

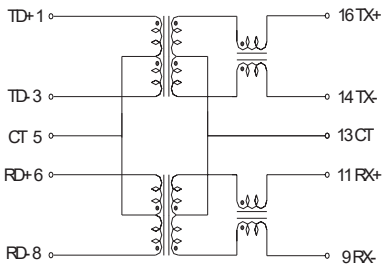


**FAH1606SR,FAH1603DR**

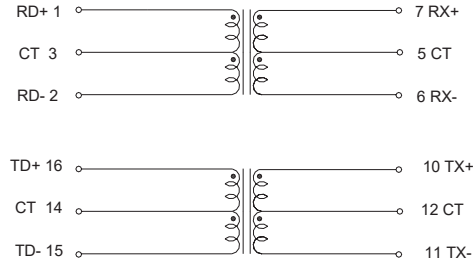


Schematic

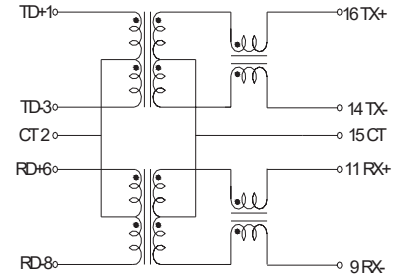
FAH1603SR, FAH16012DR



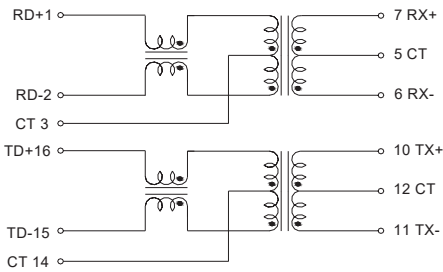
FAH1604DR



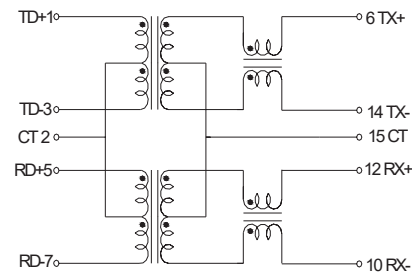
FAH1605DR



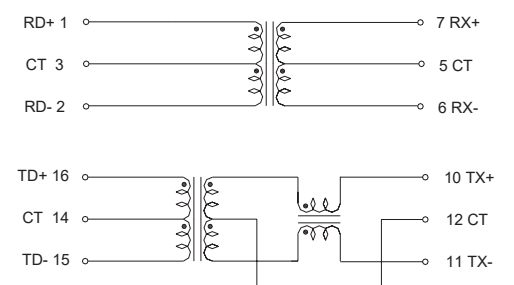
FAH1607DR



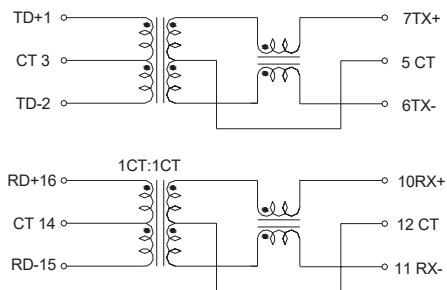
FAH1608SR, FAH1609DR



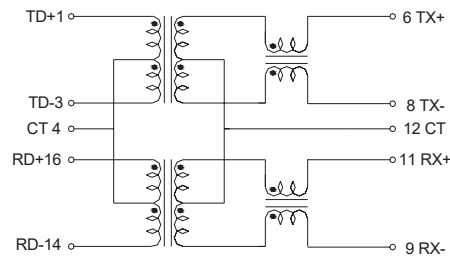
FAH1610DR



FAH1611DR



FAH1613DR



FAH1614DR

