

# Dual port transformer modules 20Pin series

## FEATURES

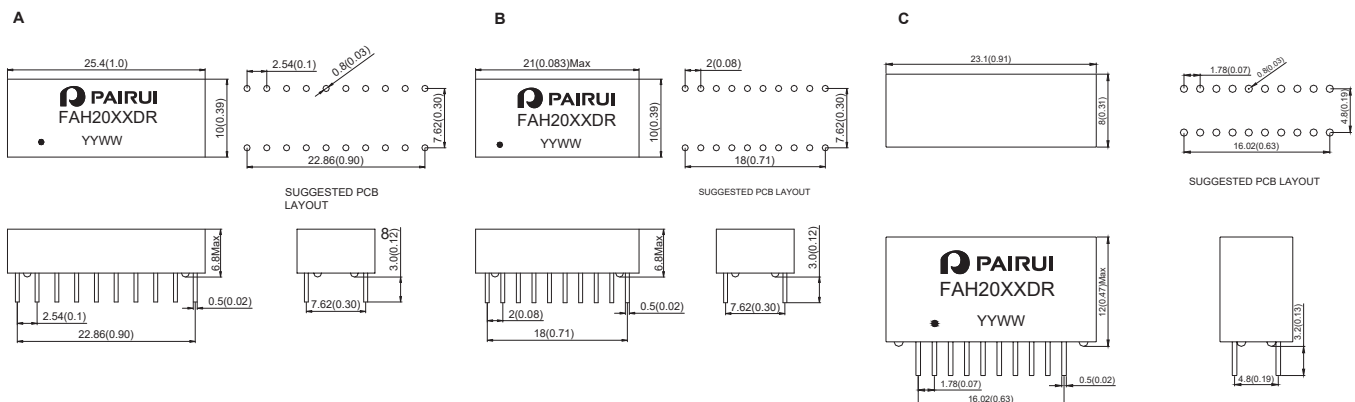
Compliant with IEEE 802.3 standard.  
Designed for Auto MDI/MDIX Applications  
Primary inductance:350uH Min.@ 100KHz,0.1Vrms,8mA  
RoHS compliant



## Electrical Specification@25°C Operating Temperature 0 to 70°C

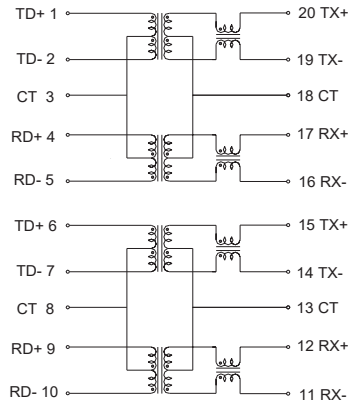
Part Number	Insertion Loss (dB Max) 1-100MHz	Return Loss (dB Typical) MHz				CMRR (dB Min) MHz		Cross talk (dB Min) MHz		Isolation Voltage (Vrms Min)	Package
		1-30	40	50	60-80	0.1-60	60-100	0.1-60	60-100		
FAH2001DR	-1.0	-18	-14.4	-13.1	-12	-42	-40	-40	-38	1500	A
FAH2002DR	-1.0	-18	-14.4	-13.1	-12	-42	-40	-40	-38	1500	B
FAH2003DR	-1.0	-18	-14.4	-13.1	-12	-42	-40	-40	-38	1500	A
FAH2004DR	-1.0	-18	-14.4	-13.1	-12	-42	-40	-40	-38	1500	A
FAH2005DR	-1.0	-18	-14.4	-13.1	-12	-42	-40	-40	-38	1500	A
FAH2006DR	-1.0	-18	-14.4	-13.1	-12	-42	-40	-40	-38	1500	B
FAH2007DR	-1.0	-18	-14.4	-13.1	-12	-42	-40	-40	-38	1500	B
FAH2008DR	-1.0	-18	-14.4	-13.1	-12	-42	-40	-40	-38	1500	B
FAH2009DR	-1.0	-18	-14.4	-13.1	-12	-42	-40	-40	-38	1500	A
FAH2010DR	-1.0	-18	-14.4	-13.1	-12	-42	-40	-40	-38	1500	A
FAH2011DR	-1.0	-18	-14.4	-13.1	-12	-42	-40	-40	-38	1500	A
FAH2012DR	-1.0	-18	-14.4	-13.1	-12	-42	-40	-40	-38	1500	A
FAH2013DR	-1.0	-18	-14.4	-13.1	-12	-42	-40	-40	-38	1500	A
FAH2014DR	-1.0	-18	-14.4	-13.1	-12	-42	-40	-40	-38	1500	C
FAH2015DR	-1.0	-18	-14.4	-13.1	-12	-42	-40	-40	-38	1500	C
FAH2016DR	-1.0	-18	-14.4	-13.1	-12	-42	-40	-40	-38	1500	B
FAH2017DR	-1.0	-18	-14.4	-13.1	-12	-42	-40	-40	-38	1500	B

## Dimension : mm[inch]+/-0.25[0.01]

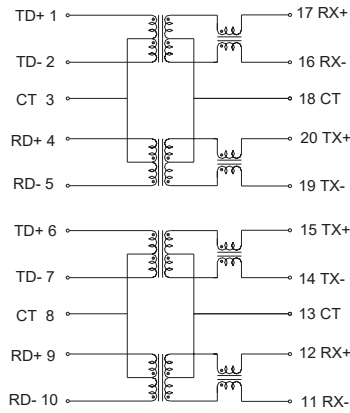


Schematic

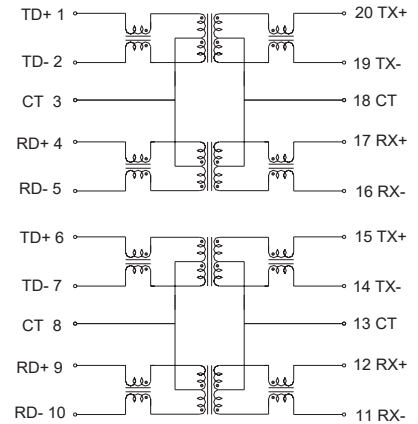
FAH2001DR, FAH2002DR



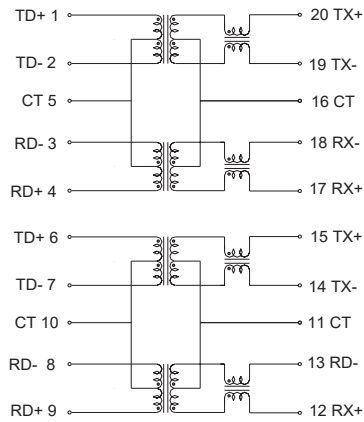
FAH2005DR, FAH2006DR



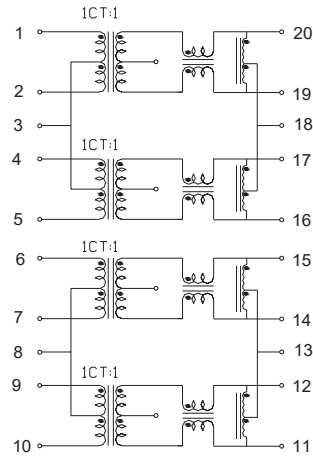
FAH2003DR, FAH2007DR



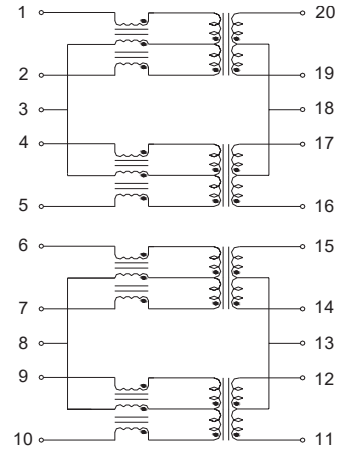
FAH2004DR, FAH2008DR, FAH2014DR



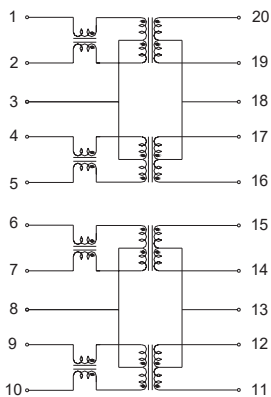
FAH2010DR



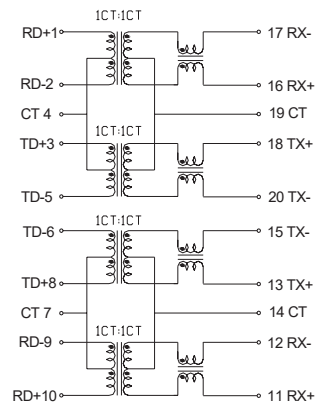
FAH2011DR



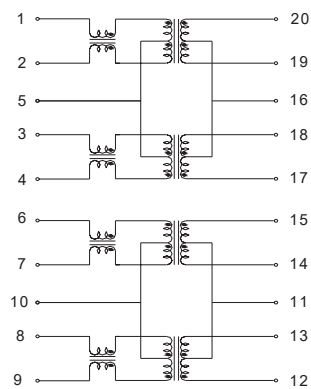
FAH2012DR, FAH2016DR



FAH2013DR



FAH2015DR



FAH2009DR, FAH2017DR

