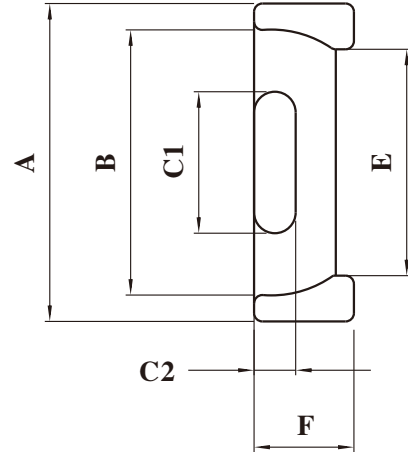
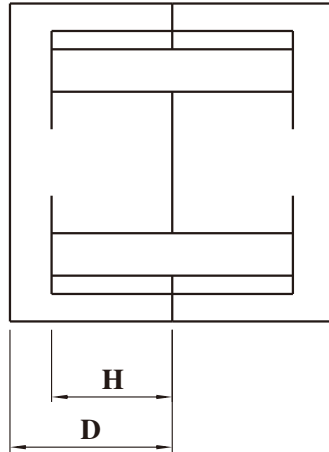


Dimension: (UNIT:mm)

A	30.1 ± 0.5
B	23.60Min
C1	15.0 ± 0.2
C2	4.0 ± 0.2
D	17.5 ± 0.2
E	20.0Min
F	8.0 ± 0.3
H	13.0 ± 0.2

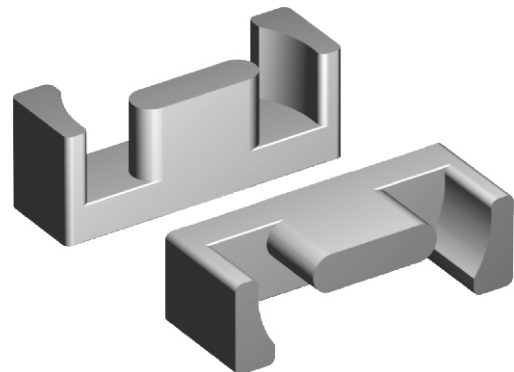


**Test conditions**

AL: F=1.0KHz U=0.3V N=10Ts

**Effective parameter**

C1(mm) <sup>-1</sup>	Ae(mm <sup>2</sup> )	Le(mm)	Ve(mm <sup>3</sup> )	Weight(g)
1.34	61.0	81.6	4949	≈11.5



Core sets for general purpose transformers and power filter applications.

Clamping force for Al measurements, 15+/-5N.

Properties under power conditions

Grade	AL (nH)	μe	AIR GAP μm	Type number
P3	1600±25%		≈0	EPC30-P3

Grade	B (mT)at	Core loss (w) at			
	H=250 A/m F=10KHz T=100 °C	F=100 KHz B=100mT T=100 °C	f=100 KHz B=200mT T=100 °C	F=500 KHz B=50mT T=100 °C	F=500 KHz B=100mT T=100 °C
P3	≥320				

**Note:**

- 1: Document is the property of FUAN Inc & is not allow to be duplicated without authorization
- 2: RoHS compliant.