

Single port transformer modules 12Pin series

FEATURES

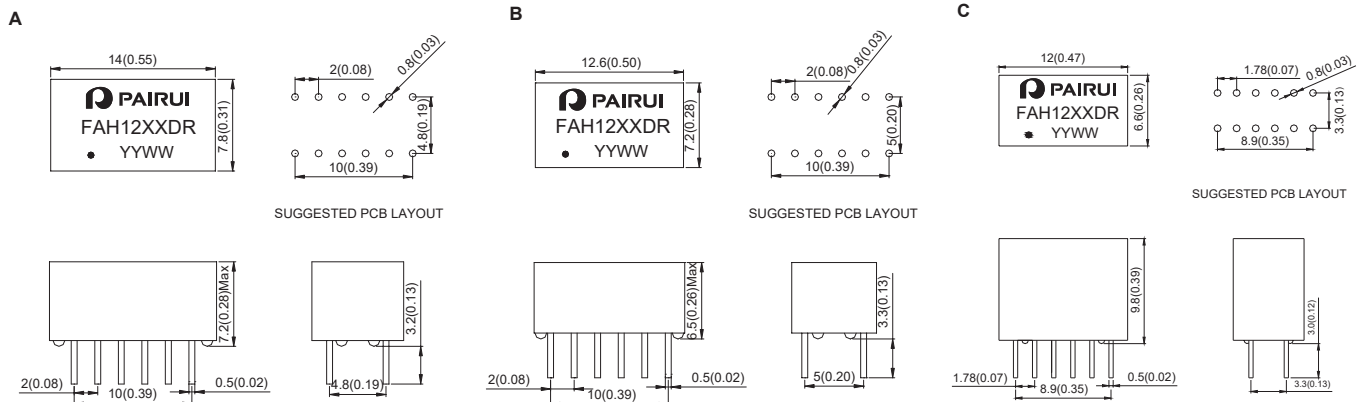
Compliant with IEEE 802.3 standard.
Primary inductance:350uH Min.@ 100KHz,0.1Vrms,8mA
RoHS compliant



Electrical Specification@25°C Operating Temperature 0 to 70°C

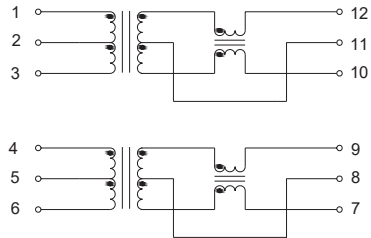
Part Number	Insertion Loss (dB Max) 1-100MHz	Return Loss (dB Typical) MHz				CMRR (dB Min) MHz		Cross talk (dB Min) MHz		Isolation Voltage (Vrms Min)	Package
		1-30	40	50	60-80	0.1-60	60-100	0.1-60	60-100		
FAH1201DR	-1.0	-18	-14.4	-13.1	-12	-42	-40	-40	-38	1500	A
FAH1202DR	-1.0	-18	-14.4	-13.1	-12	-42	-40	-40	-38	1500	A
FAH1203DR	-1.0	-18	-14.4	-13.1	-12	-42	-40	-40	-38	1500	A
FAH1204DR	-1.0	-18	-14.4	-13.1	-12	-42	-40	-40	-38	1500	A
FAH1205DR	-1.0	-18	-14.4	-13.1	-12	-42	-40	-40	-38	1500	A
FAH1206DR	-1.0	-18	-14.4	-13.1	-12	-42	-40	-40	-38	1500	A
FAH1207DR	-1.0	-18	-14.4	-13.1	-12	-42	-40	-40	-38	1500	B
FAH1208DR	-1.0	-18	-14.4	-13.1	-12	-42	-40	-40	-38	1500	B
FAH1209DR	-1.0	-18	-14.4	-13.1	-12	-42	-40	-40	-38	1500	B
FAH1210DR	-1.0	-18	-14.4	-13.1	-12	-42	-40	-40	-38	1500	B
FAH1211DR	-1.0	-18	-14.4	-13.1	-12	-42	-40	-40	-38	1500	B
FAH1212DR	-1.0	-18	-14.4	-13.1	-12	-42	-40	-40	-38	1500	B
FAH1213DR	-1.0	-18	-14.4	-13.1	-12	-42	-40	-40	-38	1500	A
FAH1214DR	-1.0	-18	-14.4	-13.1	-12	-42	-40	-40	-38	1500	B
FAH1215DR	-1.0	-18	-14.4	-13.1	-12	-42	-40	-40	-38	1500	A
FAH1216DR	-1.0	-18	-14.4	-13.1	-12	-42	-40	-40	-38	1500	C

Dimension : mm[inch]+/-0.25[0.01]

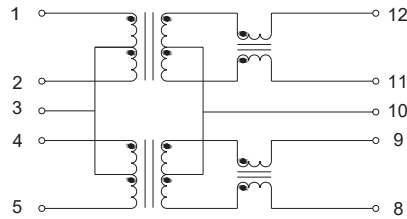


Schematic

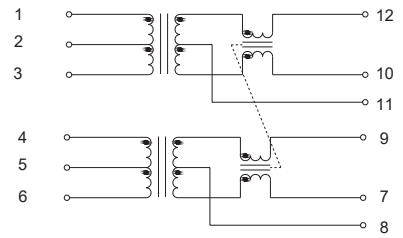
FAH1201DR, FAH1207DR, FAH1216DR



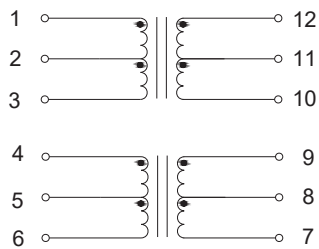
FAH1202DR, FAH1208DR



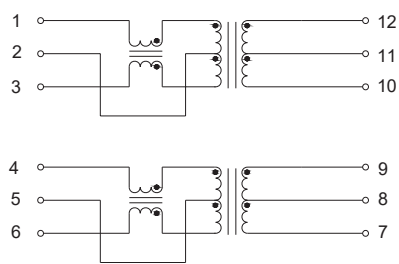
FAH1203DR, FAH1209DR



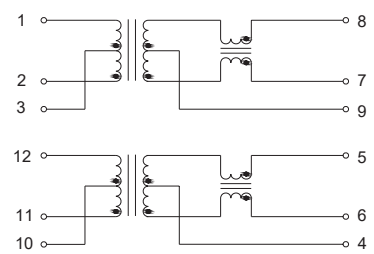
FAH1204DR, FAH1210DR



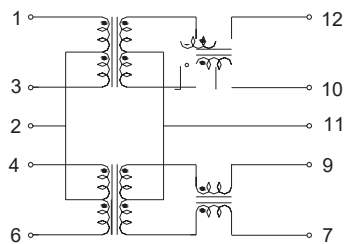
FAH1205DR, FAH1211DR



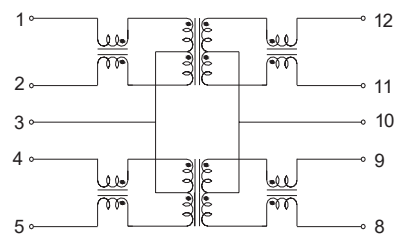
FAH1206DR, FAH1212DR



FAH1213DR



FAH1214DR



FAH1215DR

